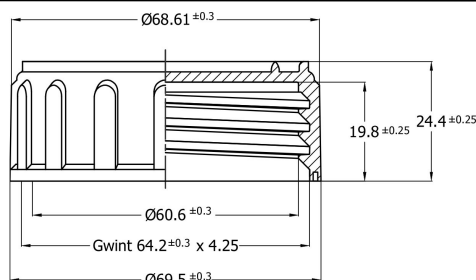
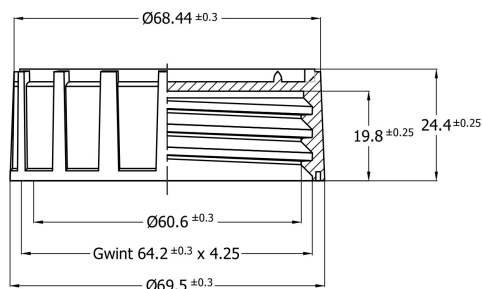


## Polyethylene cap K63/

### K63/...-A model A



### K63/...-B model B



### Order code

**K63/ colour / sealing insert - cap model**

Example: K63/B/P-A (white K63 cap with polyethylene foam, model A)  
K63/C/IO-B (red K63 cap, induction sealing with venthyl, model B)

Marking of standard colors:

B white, Y yellow, O orange, C red, F violet, N blue, Z green, BR brown, CZ black.

**Dedicated client colors will be prepared for approval. Please use RAL or Pantone symbol.**

### Sealing insert types

- I** - induction sealing
- IO** - induction sealing with venthyl
- P** - polyethylene foam sealing
- PO** - polyethylene foam sealing with venthyl

### Important information

- recommended closing force 5-6 Nm with K63 cap series. Exceeding 8 Nm may damage the insert or cap and also result in leaks,
- do not cause the seal density above 40%.
- for proper operation the cap requires the correct neck geometry and a compatible container,
- during the heating season, it is recommended to store the caps for at least 24 hours in a heated room before use.

### Packing - Palletizing

Packing unit/box	400 pcs/box	Pallet	120 x 80 cm
Pallet - 30 boxes	12 000 pcs	Pallet weight	265 kg
		Pallet height	210 cm
Cap with insert weight	19.2g ± 0.5	Box WxLxH	385x385x380mm
Material HDPE	Hostalen GC7260	Box weight	8,2 kg

edit date 11.02.2020 r.

NS Automatyka Sp. z o.o.  
37-310 Nowa Sarzyna, ul. Leśna 2a  
tel.: +48 17 2411380  
zamowienia@nsautomatyka.com.pl  
www.nsautomatyka.com.pl



VAT EU PL8161501450  
REGON 690690533  
BDO 00002881

nsA  
ISO 9001: 2015