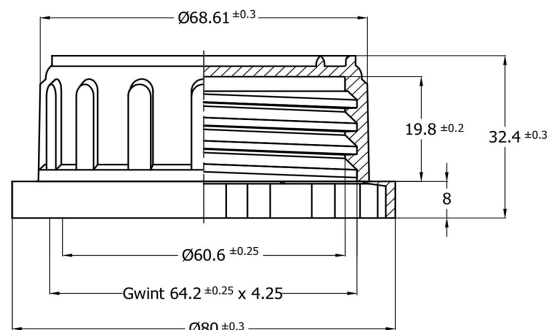


## Polyethylene cap K63S/ with self-sealing ring

### K63S/...-A model A



### Order code

K63S/ colour / sealing insert - cap model (A)

Example: K63S/B/P-A (white K50S cap with polyethylene foam sealing, model A)  
K63S/C/I-A (red K50S cap, induction sealing, model A)

Marking of standard colors:

B white, Y yellow, O orange, C red, F violet, N blue, Z green, BR brown, CZ black.

Dedicated client colors will be prepared for approval. Please use RAL or Pantone symbol.

### Sealing insert types

- I - induction sealing
- IO - induction sealing with venthyl
- P - polyethylene foam sealing
- PO - polyethylene foam sealing with venthyl

### Important information

- recommended closing force 5-6 Nm with K63 cap series. Exceeding 8 Nm may damage the insert or cap and also result in leaks,
- do not cause the seal density above 40%.
- for proper operation the cap requires the correct neck geometry and a compatible container,
- during the heating season, it is recommended to store the caps for at least 24 hours in a heated room before use.

### Packing - Palletizing

Packing unit/box	250 pcs/box	Pallette	120 x 80 cm
Pallette - 30 boxes	7 500 pcs	Pallette weight	200 kg
		Pallette height	210 cm
Cap with insert weight	21.6g ± 0.5	Box WxLxH	385x385x380mm
Material HDPE	Hostalen GC7260	Box weight	6 kg

edit date 11.02.2020r.

NS Automatyka Sp. z o.o.  
37-310 Nowa Sarzyna, ul. Leśna 2a  
tel.: +48 17 2411380  
zamowienia@nsautomatyka.com.pl  
www.nsautomatyka.com.pl



VAT EU PL8161501450  
REGON 690690533  
BDO 00002881

ISO 9001: 2015