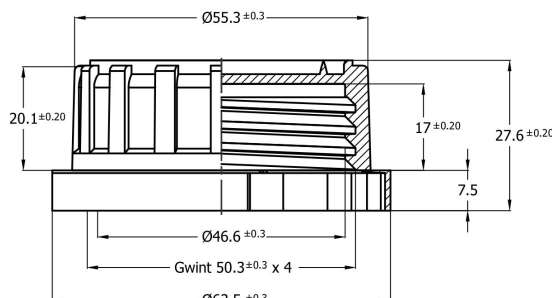


Polyethylene cap K50S/ with self-sealing ring

K50S/...-B model B



Order code

K50S/colour / sealing insert – cap model (B)

Example: K50S/B/P-B (white K50S cap, polyethylene foam sealing, model B)
K50S/C/I-B (red K50S cap, induction sealing, model B)

Marking of standard colors:

B white, Y yellow, O orange, C red, F violet, N blue, Z green, BR brown, CZ black.

Dedicated client colors will be prepared for approval. Please use RAL or Pantone symbol.

Sealing insert types

- I – induction sealing
- IO – induction sealing with venthyl
- P – polyethylene foam sealing
- PO – polyethylene foam sealing with venthyl

Important information

- recommended closing force 4-5 Nm with K50 cap series. Exceeding 6 Nm may damage the insert or cap and also result in leaks,
- do not cause the seal density above 40%.
- for proper operation the cap requires the correct neck geometry and a compatible container,
- during the heating season, it is recommended to store the caps for at least 24 hours in a heated room before use.

Packing – Palletizing

Packing unit/box	500 pcs/box	Pallette	120 x 80 cm
Pallette – 30 boxes	15 000 pcs	Pallette weight	240 kg
		Pallette height	210 cm
Cap with insert weight	13.7g ± 0.5	Box WxLxH	385x385x380mm
Material HDPE	Hostalen GC7260	Box weight	7,4 kg

edit date 11.02.2020r.

NS Automatyka Sp. z o.o.
37-310 Nowa Sarzyna, ul. Leśna 2a
tel.: +48 17 2411380
zamowienia@nsautomatyka.com.pl
www.nsautomatyka.com.pl



VAT EU PL8161501450
REGON 690690533
BDO 00002881


ISO 9001: 2015